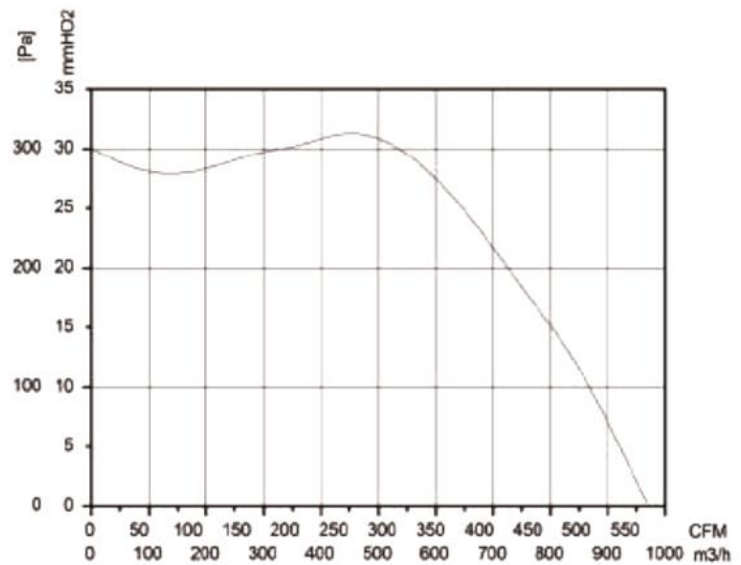
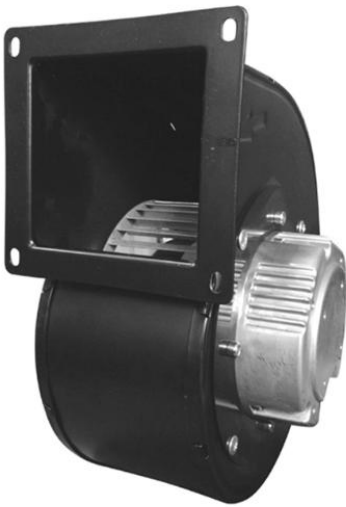


CENTRIFUGAL FAN - FORWARD
 EC

LWFE3G-180


Motor Type : BLEC Motor

Impeller Material : Galvanized Metal

Protection Class : IP44

Insulation Class : F

Certification : CE/ETL/CCC

Operation Temperature : - 25 °C ~ +60 °C

Bearing Type : Ball Bearing

Technical Feature :

Control input 0~10VDC/PWM ,Tech output,Locked-Rotor protection ,

Reverse Polarity ,Over-voltage protection

Soft Start Protection,

■ Technical Specification

Model	Bearing Type	Rated Voltage	Operating Voltage	Rated Current	Rated Power	Speed	Air Flow	Air Pressure	Noise
	B/S	V	V	A	W	RPM	m³/h	Pa	dBA
LWFE3G-180-092SS-01	Ball	230	200~277	1.85	250	1830	967	300	72
	Ball	310 (VDC)	226~396	0.81	250	1830	967	300	72

